

Box office 0116 242 2800

14

Share your memories of Leicester's industrial past

Help us create a new exhibition and smartphone app

Now transformed into the Cultural Quarter, the St. George's area of Leicester – where Phoenix is based – was once a hive of industry, dominated by factories and warehouses.

By the 1960s, in the face of growing foreign competition, changing fashions and domestic policy, this industry began to decline. Old family firms were bought-out, relocated or declined until by the late 1990s much of the area was unused.

Phoenix is involved in a project with the University of Leicester and Cuttlefish to collect and exhibit memories from people who experienced the area in its industrial heyday. Did you work in a hosiery factory like Charnwood or Rowley's, or know someone who did? Or a footwear firm like Faire Brothers or Squirells?

We're also keen to hear about the reuse of these industrial buildings as 'underground' music and arts venues during the period of decline. Perhaps you were an 80s new romantic in Helsinki, or a 90s new raver in the infamous Dielectric?

We need you!

If you have memories or memorabilia you'd like to share, join us at the project launch at Phoenix on Saturday 6th July, or at one of our drop in sessions from Mon 8 - Fri 12 Jul.

Exhibition and smartphone 'app'

The stories and materials we gather will contribute to an exhibition later this year at Phoenix. They will also be added to a new Cultural Quarter iPhone and Android app and the East Midlands Oral History Archive. Learn more online at: www.leicestercultureapp.co.uk

Project launch, Phoenix
Sat 6 Jul, 10am - 2pm

Drop-in, Phoenix
Mon 8 - Fri 12 Jul

For drop-in times, please contact: projects@cuttlefish.com

Funded by the Arts and Humanities Research Council

1 & 3 – Workers at Rowley's factory on Queen's Street 1988 [Images: Leicester Mercury Archive at the University of Leicester].
2 – Building which housed Dielectric in the 90s – taken early 2000s [Image: Colin Hyde].



cuttlefish

University of Leicester



Phoenix is also looking to explore its own history, which dates back to the building of our former Newark Street home in the 1960s.

If you've got any old brochures, posters or other memorabilia relating to Phoenix over its 50 year history we'd love to hear from you. We'd like to exhibit them in our cafebar.

Please write to us, email chris.tyrer@phoenix.org.uk or talk to a member of staff at the box office for more details.



Digital Kite Flying

Brendan Oliver
Concept & exhibition design
by **Gurdeep Sian**

29 Jun - 20 Jul
Cube gallery

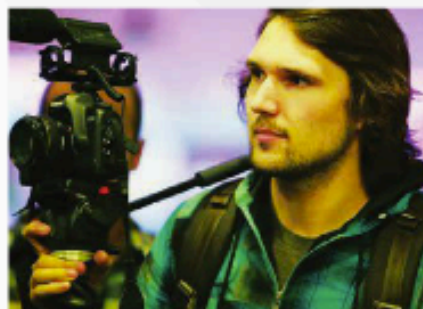
Digital Kite Flying is an interactive artwork that whisks you away to the rooftops of the Indian city of Udaipur.

Using body tracking sensors that respond to your hand movements, you can fly digital kites high above the city from within Phoenix's Cube gallery. Great fun for all ages!

You can also design your own kites that will become part of the artwork. Either visit the exhibition at Phoenix or create your own digital kite design online at digitalkites.indiansummer.org.uk.

All the saved kite designs will be ready and available to fly as part of the installation.

Digital Kite Flying draws on the rich history of the kite and its relationship with Indian culture. It has been commissioned by Phoenix in partnership with An Indian Summer for this year's Indian Summer Festival.



Calling all filmmakers!

The Short Cinema film festival is now open for submissions

Deadline: midnight, Sat 10 Aug

Leicester's premier short film festival will return to Phoenix on Wed 28 Aug for another evening showcasing the very best in short film from the Midlands.

Presenting an eclectic mix of genres and styles, The Short Cinema celebrates new, developing and established film-makers from the region.

If you'd like to submit a short film (up to 15 minutes) for consideration, submission guidelines and an entry form are available on the Phoenix website under 'Events / Festivals'.

New screenings for the disabled

We're delighted to be able to offer a series of film screenings for people with physical and learning disabilities. Developed with local charities, our new 'Access Cinema' programme will include dedicated screenings in specially-tailored environments for the following people:

- Deaf and hard of hearing
- Blind and partially sighted
- People with learning disabilities
- Those on the Autistic / Asperger's spectrum

Find out more at www.phoenix.org.uk under the Access Cinema heading. Individual films are also listed under 'Access' in the diary in this brochure. The programme is supported by the National Lottery through the BFI and Creative England.

 **actionDEAFNESS**



 **VALUES**
Supporting People with Learning Disabilities

vista 
improving lives of people with sight loss